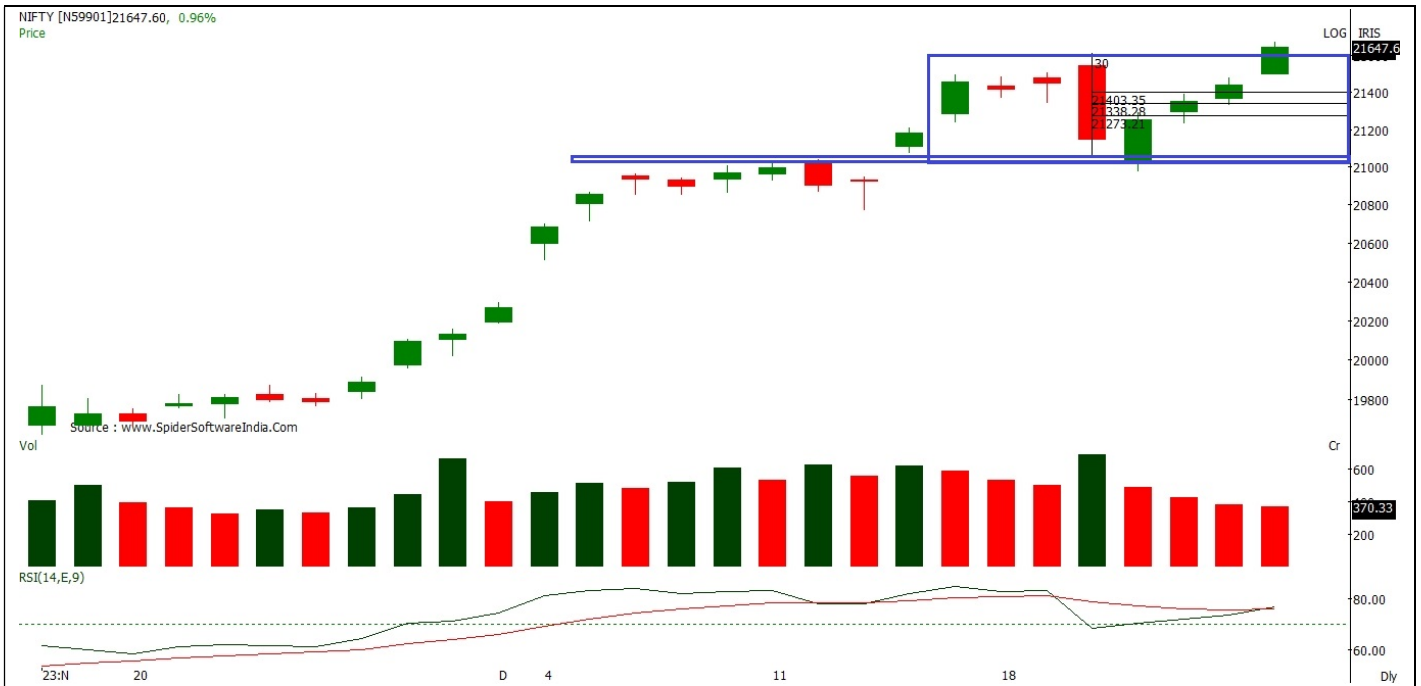


Index	CMP	% Chng	S2	S1	P	R1	R2
Nifty	21,654.75	1.00%	21430	21540	21610	21720	21790
Sensex	72,038.43	0.98%	71230	71635	71875	72280	72525
Bank Nifty	48,282.20	1.17%	47605	47945	48145	48485	48685



Nifty opened with an upward gap and remained in positive terrain throughout the day, closing at 21655 on December 27th with a gain of 213 points.

On the daily chart, the index formed a bullish candle, indicating a positive bias with higher high-low compared to the previous session. It broke above a recent swing high of 21593, suggesting a continuation of the uptrend. The chart pattern suggests that if Nifty crosses and sustains above the 21700 level, it would witness buying, leading the index towards 21800-21900 levels. Important support for the day is around 21600. However, if the index sustains below 21600, it may witness profit booking, taking the index towards 21500-21400 levels. Nifty is trading above 20, 50, 100, and 200-day SMAs, indicating a positive bias in the short to medium term. Nifty continues to remain in an uptrend for the short term, so buying on dips continues to be our preferred strategy.

The daily strength indicator RSI has turned positive near the 60 level mark and is above its reference line, indicating a positive bias.

The trend-deciding level for the day is 21610. If NIFTY trades above this level, then we may witness a further rally up to 21720-21790-21900 levels. However, if NIFTY trades below 21610 levels, then we may see some profit booking initiating in the market, which may correct up to 21540-21430-21360 levels.



Bank Nifty opened with an upward gap, maintaining positive momentum throughout the day and closing at 48282 on December 27th, registering a gain of 557 points.

On the daily chart, the index formed a bullish candle, exhibiting a higher High-Low formation indicative of a positive bias. Breaking above a recent swing high of 48200 signals a continuation of the uptrend. The chart pattern suggests that if Bank Nifty crosses and sustains above the 48350 level, it could witness buying, propelling the index towards 48500-48600 levels. Important support for the day is around 48200; however, if the index sustains below this level, profit booking may lead to a correction towards 48000-47900 levels. Bank Nifty is currently above its 20, 50, 100, and 200-day SMAs, indicating bullish sentiments in the near term. The index continues to remain in an uptrend for the medium and long term, emphasizing buying on dips as the preferred strategy.

The daily RSI is on the brink of crossing above its reference line, and if it surpasses this threshold, it is poised to signal a shift towards a positive bias.

The trend-deciding level for the day is 48145. If Bank Nifty trades above this level, a further rally up to 48485-48685-49025 levels may be witnessed. However, if it trades below 48145 levels, some profit booking may initiate, leading to a correction towards 47945-47605-47400 levels.

Disclosures:

The following Disclosures are being made in compliance with the SEBI Research Analyst Regulations 2014 (herein after referred to as the Regulations).

1. Axis Securities Ltd. (ASL) is a SEBI Registered Research Analyst having registration no. INH000000297. ASL, the Research Entity (RE) as defined in the Regulations, is engaged in the business of providing Stock broking services, Depository participant services & distribution of various financial products. ASL is a subsidiary company of Axis Bank Ltd. Axis Bank Ltd. is a listed public company and one of India's largest private sector bank and has its various subsidiaries engaged in businesses of Asset management, NBFC, Merchant Banking, Trusteeship, Venture Capital, Stock Broking, the details in respect of which are available on www.axisbank.com.
2. ASL is registered with the Securities & Exchange Board of India (SEBI) for its stock broking & Depository participant business activities and with the Association of Mutual Funds of India (AMFI) for distribution of financial products and also registered with IRDA as a corporate agent for insurance business activity.
3. ASL has no material adverse disciplinary history as on the date of publication of this report.
4. I/We, authors (Research team) and the name/s subscribed to this report, hereby certify that all of the views expressed in this research report accurately reflect my/our views about the subject issuer(s) or securities. I/We (Research Analyst) also certify that no part of my/our compensation was, is, or will be directly or indirectly related to the specific recommendation(s) or view(s) in this report. I/we or my/our relative or ASL or its Associate does not have any financial interest in the subject company. Also I/we or my/our relative or ASL or its Associates may have beneficial ownership of 1% or more in the subject company at the end of the month immediately preceding the date of publication of the Research Report. Since associates of ASL are engaged in various financial service businesses, they might have financial interests or beneficial ownership in various companies including the subject company/companies mentioned in this report. I/we or my/our relative or ASL or its associate does not have any material conflict of interest. I/we have not served as director / officer, employee etc. in the subject company in the last 12-month period.

Research Team

Sr. No	Name	Designation	E-mail
1	Rajesh Palviya	SVP Research (Head Technical & Derivatives)	rajesh.palviya@axissecurities.in
2	Vaishnavi Jagtap	Technical Analyst	vaishnavi.jagtap@axissecurities.in
3	Rayyan Kuwari	Technical Analyst	rayyan.kuwari@axissecurities.in

5. ASL or its Associates has not received any compensation from the subject company in the past twelve months. I/We or ASL or its Associate has not been engaged in market making activity for the subject company.
6. In the last 12-month period ending on the last day of the month immediately preceding the date of publication of this research report, ASL or any of its associates may have:
 - i. Received compensation for investment banking, merchant banking or stock broking services or for any other services from the subject company of this research report and / or;
 - ii. Managed or co-managed public offering of the securities from the subject company of this research report and / or;
 - iii. Received compensation for products or services other than investment banking, merchant banking or stock broking services from the subject company of this research report;

ASL or any of its associates have not received compensation or other benefits from the subject company of this research report or any other third-party in connection with this report.

Term& Conditions:

This report has been prepared by ASL and is meant for sole use by the recipient and not for circulation. The report and information contained herein is strictly confidential and may not be altered in any way, transmitted to, copied or distributed, in part or in whole, to any other person or to the media or reproduced in any form, without prior written consent of ASL. The report is based on the facts, figures and information that are considered true, correct, reliable and accurate. The intent of this report is not recommendatory in nature. The information is obtained from publicly available media or other sources believed to be reliable. Such information has not been independently verified and no guaranty, representation of warranty, express or implied, is made as to its accuracy, completeness or correctness. All such information and opinions are subject to change without notice. The report is prepared solely for informational purpose and does not constitute an offer document or solicitation of offer to buy or sell or subscribe for securities or other financial instruments for the clients. Though disseminated to all the customers simultaneously, not all customers may receive this report at the same time. ASL will not treat recipients as customers by virtue of their receiving this report.

Disclaimer:

Nothing in this report constitutes investment, legal, accounting and tax advice or a representation that any investment or strategy is suitable or appropriate to the recipient's specific circumstances. The securities and strategies discussed and opinions expressed, if any, in this report may not be suitable for all investors, who must make their own investment decisions, based on their own investment objectives, financial positions and needs of specific recipient.

This report may not be taken in substitution for the exercise of independent judgment by any recipient. Each recipient of this report should make such investigations as it deems necessary to arrive at an independent evaluation of an investment in the securities of companies referred to in this report (including the merits and risks involved), and should consult its own advisors to determine the merits and risks of such an investment. Certain transactions, including those involving futures, options and other derivatives as well as non-investment grade securities involve substantial risk and are not suitable for all investors. ASL, its directors, analysts or employees do not take any responsibility, financial or otherwise, of the losses or the damages sustained due to the investments made or any action taken on basis of this report, including but not restricted to, fluctuation in the prices of shares and bonds, changes in the currency rates, diminution in the NAVs, reduction in the dividend or income, etc. Past performance is not necessarily a guide to future performance. Investors are advised necessarily a guide to future performance. Investors are advised to see Risk Disclosure Document to understand the risks associated before investing in the securities markets. Actual results may differ materially from those set forth in projections. Forward-looking statements are not predictions and may be subject to change without notice.

ASL and its affiliated companies, their directors and employees may; (a) from time to time, have long or short position(s) in, and buy or sell the securities of the company(ies) mentioned herein or (b) be engaged in any other transaction involving such securities or earn brokerage or other compensation or act as a market maker in the financial instruments of the company(ies) discussed herein or act as an advisor or investment banker, lender/borrower to such company(ies) or may have any other potential conflict of interests with respect to any recommendation and other related information and opinions. Each of these entities functions as a separate, distinct and independent of each other. The recipient should take this into account before interpreting this document.

ASL and / or its affiliates do and seek to do business including investment banking with companies covered in its research reports. As a result, the recipients of this report should be aware that ASL may have a potential conflict of interest that may affect the objectivity of this report. Compensation of Research Analysts is not based on any specific merchant banking, investment banking or brokerage service transactions. ASL may have issued other reports that are inconsistent with and reach different conclusion from the information presented in this report.

Neither this report nor any copy of it may be taken or transmitted into the United State (to U.S. Persons), Canada, or Japan or distributed, directly or indirectly, in the United States or Canada or distributed or redistributed in Japan or to any resident thereof. If this report is inadvertently sent or has reached any individual in such country, especially, USA, the same may be ignored and brought to the attention of the sender. This report is not directed or intended for distribution to, or use by, any person or entity who is a citizen or resident of or located in any locality, state, country or other jurisdiction, where such distribution, publication, availability or use would be contrary to law, regulation or which would subject ASL to any registration or licensing requirement within such jurisdiction. The securities described herein may or may not be eligible for sale in all jurisdictions or to certain category of investors.

The Disclosures of Interest Statement incorporated in this document is provided solely to enhance the transparency and should not be treated as endorsement of the views expressed in the report. The Company reserves the right to make modifications and alternations to this document as may be required from time to time without any prior notice. The views expressed are those of the analyst(s) and the Company may or may not subscribe to all the views expressed therein.

Copyright in this document vests with Axis Securities Limited.

Axis Securities Limited, SEBI Single Reg. No.- NSE, BSE & MSEI – INZ000161633, ARN No. 64610, CDSL-IN-DP-CDSL-693-2013, SEBI-Research Analyst Reg. No. INH 000000297, SEBI Portfolio Manager Reg. No.- INP000000654, Main/Dealing off.- Axis Securities Ltd, Unit No.1001, 10th Floor, Level-6, Q2 Building, Aurum, Q Parc, Plot No. 4/1, TTC, Thane – Belapur Road, Ghansoli, Navi Mumbai. – 400 710.

Regd. off.- Axis House,8th Floor, Wadia International Centre, PandurangBudhkar Marg, Worli, Mumbai – 400 025. Compliance Officer: Jatin Sanghani, Email: compliance.officer@axisdirect.in, Tel No: 022-49212706.

Derivatives

Worried about market swings?
Make the most of it using Derivatives (F&O)



Hedge Risk

Low on Cost

Flexible

Activate for free

Learn more

**BUY MORE
PAY LATER**

required to purchase stocks

**Margin Trading
for Investments**

Switch to Buy More Pay Later (E-Margin) Facility from Axis Direct to get up to 75% additional funds required to purchase stocks.



Why activate Buy More Pay Later?

- Leverage assets to increase your buying power
- Access funds without liquidating your current assets
- No hassle of extra paperwork
- Activate at no extra cost

Enable now for free